



FFORDD DARWIN

BARRY

FFORDD DARWIN

WATERFRONT, CF63 4RS

GUIDE PRICE

£335,000 - FREEHOLD



3 Bed



2 Bath



1216.32 sq ft

Positioned in the newest area of Ffordd Darwin, Barry, this delightful end terrace house presents an excellent opportunity for families and individuals alike. Spanning an impressive 1,216 square feet, the property boasts a well-thought-out layout that includes two spacious reception rooms, perfect for both relaxation and entertaining guests.

The house features three generously sized bedrooms, providing ample space for family living or the possibility of creating a home office. With two modern bathrooms, morning routines will be a breeze, ensuring convenience for all residents. Also benefits from two parking spaces.

Situated in a new estate, this property benefits from contemporary design and amenities, making it an attractive choice for those seeking a fresh start in a vibrant community. The absence of a chain means that you can move in without delay, allowing you to settle into your new home with ease.

Ffordd Darwin is well-connected, offering easy access to local shops, schools, and parks, making it an ideal location for families. This end terrace house is not just a property; it is a place where memories can be made and cherished for years to come. Don't miss the chance to make this lovely house your new home.

KITCHEN/FAMILY AREA
17'1" x 9'1"

DINING ROOM
15'1" x 9'8"

LOUNGE
15'1" x 10'8"


BEDROOM TWO
15'1" x 8'09"

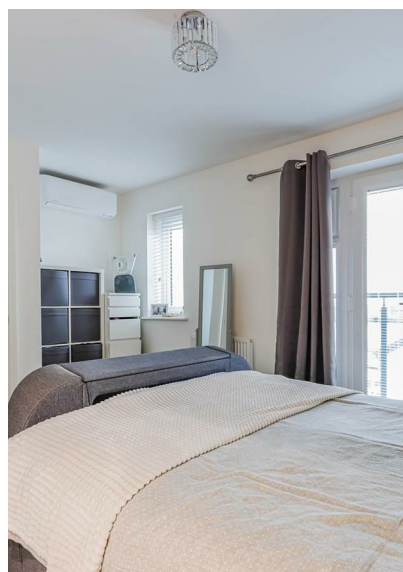
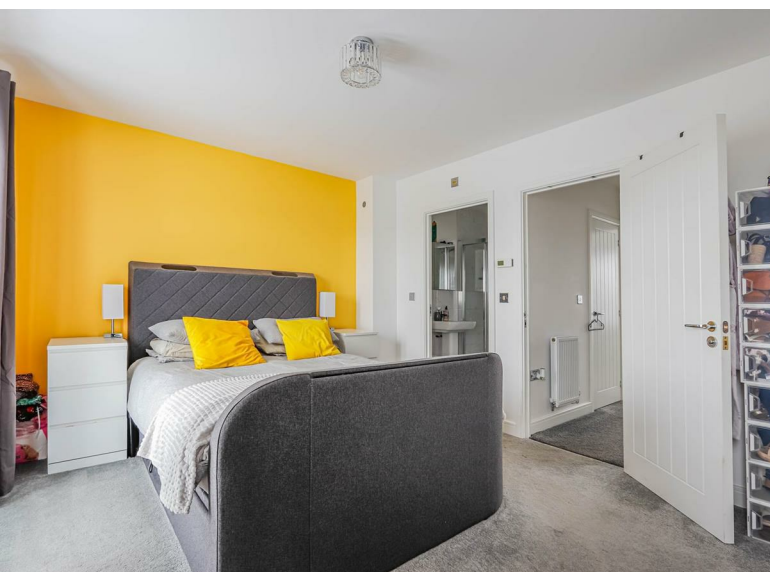
BEDROOM ONE
15'1" x 10'9"

BEDROOM THREE
15'1" x 9'1"

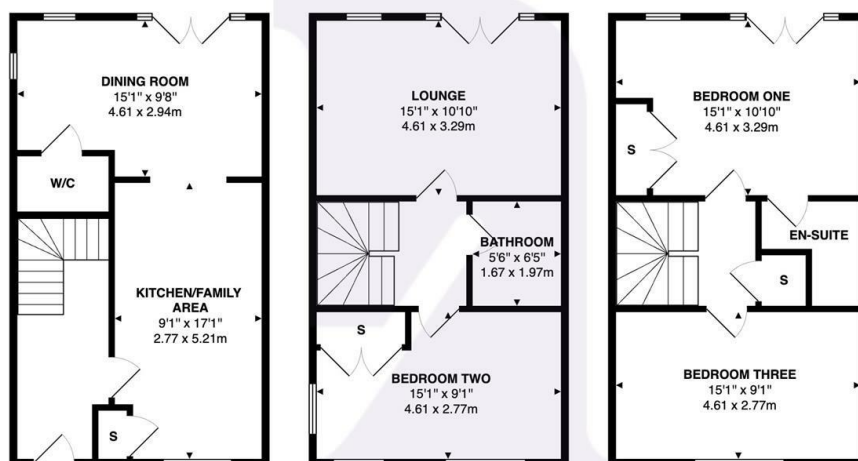




Energy Efficiency Rating		
	Current	Potential
Very energy efficient - lower running costs		
(92 plus) A		95
(81-91) B	85	
(69-80) C		
(55-68) D		
(39-54) E		
(21-38) F		
(1-20) G		
Not energy efficient - higher running costs		
England & Wales	EU Directive 2002/91/EC 	



Ffordd Darwin, Barry, CF63 4RS



Total Area: 1231 ft² ... 114.4 m²
All measurements are approximate and for display purposes only

BARRY & THE VALE'S HOME FOR

STYLISH SALES
& LETTINGS



KNIGHTS